

Fall 2011

Inside

Welcome 2011/12
Board Officers

Rose Women's
Foundation

IKEA Selects Family
Tree As Charity Partner

Climbing For A Cause

How To Help Workshop

Corporate Spotlight -
Encana Men's Relay
Team

Family Tree, Inc.
3805 Marshall St., #100
Wheat Ridge, CO 80033
Phone: (303) 422-2133
www.thefamilytree.org

Children's Services

Adams County Projects
TANF Stable Families Project
Early Intervention &
Prevention
Community Family Resource
Team

Arapahoe County Kinship
Family Stability Program

Military Family Assistance
Program

Gemini

Domestic Violence Services

Women In Crisis

Legal Advocacy Program

Counseling & Education
Program

Parenting Time Program

Homelessness Services

House of Hope

Housing & Family Services

Gifts & Community Support

Volunteer Services

Treasure Trunk Thrift Store

KAMMY SHARES THE HARDSHIPS OF HOMELESSNESS

Every client's journey to self-sufficiency is different and the tools necessary for success can often vary. Whether it's emotional support, financial assistance or simply the opportunity for growth, a person's motivation to succeed is often based on his/her life experiences.

For Kammy, success came with a new found sense of maturity. A maturity that she acknowledges she didn't possess initially. A maturity Kammy was forced to learn at a very young age, as she has felt the hardships of homelessness her entire life.

Kammy reflects on how horrible it was to be a child in a homeless family. She constantly worked hard to ensure her friends never knew her family was homeless because it was so embarrassing to her. It seemed as though there was so much moving between shelters, motels and friends homes that Kammy can't remember living anywhere for longer than a year.



"My kids are my motivation. I didn't want them to grow up the way I did. I want them to learn that in life things aren't just handed to you. You have to work hard for the things you want and take care of the things you have," added Kammy.

Based on the constant changes, Kammy had no real sense of security growing up and felt like her life was a cycle of always having to start over. At age 13, she began using drugs and eventually she felt as though her drug dealer was her only friend.

Kammy's aunt initially referred her to Family Tree House of Hope, the only shelter for homeless families in Arapahoe County. "At first, I didn't like House of Hope. I didn't like the rules. I didn't like that I had to be out of the shelter at a certain time, back at a certain time and lights out at a certain time."

Kammy definitely struggled with the rules of the house and didn't seem extremely motivated during her first stint at House of Hope. Fortunately, she was accepted back into the program one year later and Kammy became a changed woman.

After she returned for a second time, Kammy became a model resident and was able to stay off drugs, which was a major key to her success. Her new found maturity had transformed her and she was committed to making every effort to provide a better life for her two children, Joey, age 2 and Jonathan, age 3.

"My kids are my motivation. I didn't want them to grow up the way I did. I want them to learn that in life things aren't just handed to you. You have to work hard for the things you want and take care of the things you have," added Kammy.

(cover story cont. page 3)

Family Tree Welcomes 2011/12 Board Officers

In our 35th year of helping the Denver metro area overcome child abuse, domestic violence and homelessness, Family Tree welcomes a new slate of officers for the 2011/12 Board of Directors.

Chair: Brad Geissler
Chair-Elect: Lowell Miller
Secretary: Sharon Boyd
Treasurer: Judi Lacko Zallaps

Mr. Geissler is the owner and founder of Halcyon Realty, LLC and has been a member of the Family Tree Board of Directors since spring 2006. During his five years of service, Mr. Geissler has also been an active member on the Family Tree Executive Committee, Development Committee, Planned Giving Committee and Services Committee.

Mr. Miller is an entrepreneur and investor and joined the board in June 2009. His experience and expertise has been instrumental to the Family Tree Communications Council over the past two years.

Ms. Boyd has been a member of the Board of Directors since March 2007 and has held the position of Secretary since July 2009. Currently, she is the Senior Regional Account Executive for Comcast Spotlight Denver. Ms. Boyd is also the Chair of Family Tree's Communications Council.

Ms. Lacko Zallaps was formerly the Vice President of Global International Financial Reporting Standards for First Data and prior to that the Vice President and Chief Accounting Officer for First Data International. Although she is fairly new to the Board, beginning her membership in March 2011, she is not new to Family Tree, as she has been an active member of Family Tree's Finance Committee for over two years.

For more information or to see a full list of Family Tree's 2011/12 Board of Directors, visit www.thefamilytree.org.

E V E N T S

Denim & Diamonds 11th Annual Auction Fundraiser October 6th

Featuring over 120 amazing silent auction items and an exciting live auction.

Domestic Violence Training Symposium November 1st - 12th

This 20-hour training symposium provides a comprehensive understanding of the foundations and dynamics of domestic violence.

Girls Night Out October 20th

Help end domestic violence while treating yourself to an evening filled with shopping, pampering, food and prizes.

Colorado Gives Day December 6th

Join Family Tree and Community First Foundation in Colorado Gives Day, an initiative to increase philanthropy in Colorado through online giving.

Homelessness 101 October 20th

6 p.m. - 9 p.m.

Gain a better understanding of the realities of homelessness and how you can help.

Volunteer Orientation Last Saturday of every month

9 a.m. - 1 p.m.

Gain a better understanding of our three primary service areas and how volunteers make it all possible.

For more details on event times and locations, visit www.thefamilytree.org.

*your community,
your treasures,
your STORE!*

Treasure Trunk Thrift Store
7043 W. 38th Ave.
Wheat Ridge, CO 80033
(303) 421-9205



Vintage
Best Sellers
Antiques
DAILY SALES
Treasures
Deals
Designer Labels

STORE HOURS:

M-F, 10a.m. - 6p.m.
Sat., 10a.m. - 5p.m.
Sun., 12p.m. - 5p.m.

Donation Hours:

M-Sat, 10a.m. - 4p.m.



View our monthly sales calendar at
www.thefamilytree.org.

**COLORADO
HOMELESS &
RUNAWAY YOUTH
AWARENESS MONTH - NOVEMBER**

In efforts to educate our community about the serious issue of youth homelessness, Family Tree asks you to **LEARN THE STATS!**

- During the 2009/10 school year, **2,465** Jefferson County students and their families were counted as homeless.
- On any given day, more than **7,500** Colorado children reside in out-of-home care (e.g. residential treatment facilities and/or foster care).
- Statistics show that **75%** of runaway and homeless youth will have survival sex within the first 48 hours of living on the streets.
- Every day **14** youth die on the streets nationwide.
- Last year, Family Tree Gemini Therapeutic Residential Child Care Facility provided shelter and supportive services to **108** runaway and homeless youth

For more information about Runaway and Homeless Youth Awareness Month, contact us at (303) 449-4282.

Information provided by the National Runaway Switchboard, Colorado Homeless Education Data Collection and Family Tree internal statistical collection.

(cont. from cover)

In just two years, Kammy's life is one her children can be proud of. Although her parents are still homeless, she is living in her own apartment in Lakewood with assistance from Family Tree Housing and Family Services Youth Transitions Project (YTP).

After earning her GED, she was accepted at Red Rocks Community College and is working on a degree in Medical Coding and Billing. With assistance from the Colorado Opportunity Fund, Kammy is able to attend classes five days a week while her children go to daycare.

Today, Kammy's goals include getting a driver's license, purchasing a new car and obtaining permanent housing through the Denver Housing Authority.

**Pseudonyms have been used and photos substituted to protect the identity of the client.*

**Family Tree
TOURS**

If you would like to know more about Family Tree and our programs, we invite you to join us for one, or all, of the following tours:

**Domestic Violence Services
Karlis Family Center**

October 19 or November 16 - 4 p.m.

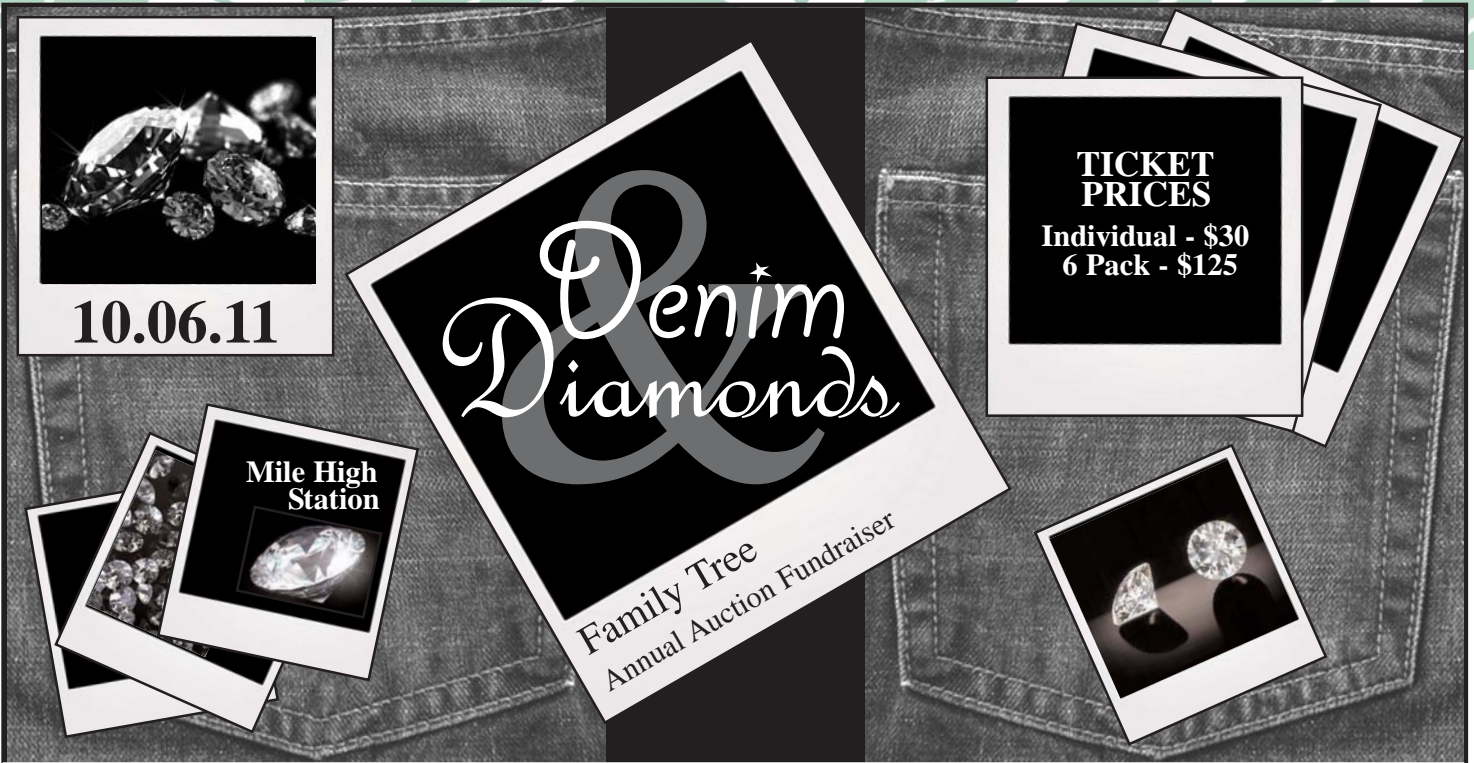
**Children's Services
Gemini**

October 19 or November 16 - 5 p.m.

**Homelessness Services
House of Hope**

October 20 or November 17 - 4 p.m.

To reserve your space and receive additional information, please call Judy Hall at (303) 422-2133.



Join Family Tree for our 11th annual auction fundraising bash, with over 120 silent auction items, a stunning live auction with one of the country's premier fundraising auctioneers, Gary Corbett, delicious food, fun and friends!

To purchase tickets or for more information call (303) 422-2133 or visit www.thefamilytree.org.

2011 Auction Sneak Peek



Kona, Hawaii Condo
Escape for one week to the Big Island in Kailua Kona, Hawaii. Enjoy this luxury 1,500 square foot ocean front condo for up to 6 guests! Voted nicest condo in Keauhou Kona Surf and Racquet.

Donor: Beverly Rasmussen

Apple iPad

This 16GB iPad includes Dock Connector to USB Cable and Power Adapter. Supports Wi-Fi and Bluetooth technology.

Donor: Marc Brady



Don't miss items from the following auction donors:

- Arapahoe Basin Ski Resort**
- Bandimere Speedway**
- D'Vine Wine**
- Isle of Capri Casinos**
- Lia Sophia**
- Maggianos Little Italy**
- National Western Stockshow**
- Scott Kennedy Fine Art**
- Sky Venture Colorado**
- Snooze**
- SkyRaider Aviation**
- Southwest Airlines**
- Vitruvian Fitness**
- And many more . . .**

For questions or additional information, contact Dana Juniell at (303) 403-5891.

CONNECT WITH FAMILY TREE ELECTRONICALLY



Sign up today to receive the latest information about Family Tree via email.

It's easy to do . . . simply visit www.thefamilytree.org and click "SIGN UP." Complete the newsletter sign-up form and begin connecting to Family Tree through our Electronic Branching Out Newsletter, E-Bulletins and E-Alerts!

For additional information or to sign-up over the phone, contact Nancy Tomb at (303) 422-2133.

Rose Women's Organization

Family Tree received a generous grant award of \$10,000 from Rose Women's Organization, a donor-advised fund of Rose Community Foundation. The funding will be used to provide safe shelter and supportive services to women and children victims of domestic violence at Family Tree Women In Crisis.

Rose Women's Organization is committed to improving the health, education and welfare of women, children and families in the greater Denver community. The organization's 2011 grantmaking focus is on programs that support women and/or children around issues of domestic violence through crisis intervention and/or prevention.



Rose Women's Organization members during a tour of Family Tree Women In Crisis safe shelter on September 14th.



IKEA CENTENNIAL SELECTS FAMILY TREE AS A CHARITY PARTNER

This August, Family Tree joined the grand opening event for IKEA Centennial which featured the singing of the Swedish national anthem, the raising of the Colorado and Swedish flags, words from Colorado chief elected officials and IKEA's top brass and best of all, the gift of \$10,000 worth of brand new IKEA furniture to be used at our shelters.

What do the Swedish retailing giant and the Wheat Ridge-based not-for-profit organization have in common? For starters, a commitment to quality and to children and families. IKEA has adopted a set of guiding principles to direct the work of the company:

- What is in the best interest of the child?
- What is in the best interest of the worker?
- What is in the best interest of the environment?

"The IKEA vision is to create a better everyday life for the many people we serve. This includes doing what we can to help create a world where we take better care of the environ-

ment, the earth's resources, and each other. We know this continuous improvement is a never-ending job, and we work hard to be part of the solution," added Kelly Frieze, store manager at IKEA Centennial.

Similarly, Family Tree maintains a vision to be the best provider of life changing services that end child abuse, domestic violence and homelessness. And our work is conducted according to these values: commitment, integrity, accountability, diversity, collaboration, advocacy.

"As Family Tree continues to help people become safe, strong and self-reliant, we commend corporations like IKEA for their commitment to promote social responsibility by supporting community agencies like ours," added Scott Shields, Family Tree CEO.

Welcome IKEA Centennial to Colorado and thank you for your generous support of our mission to end child abuse, domestic violence and homelessness! Farväl och lycka till (good luck, in Swedish!).

2nd Annual PIKESPEAKPALOOZA Raises Over \$20K

When looking to support Family Tree, most people simply write a check or attend a fundraising event, but not Shawn Tracy and Mark Sheedy, founders of Associates Group of Companies, Inc. and the second annual PIKESPEAKPALOOZA.



For four years, Tracy and Sheedy have dedicated themselves to raising much needed funds for Family Tree through Climbing For A Cause, a fundraising effort that has them ascending the world's highest peaks to help end child abuse, domestic violence and homelessness. In 2008, the duo took on Washington's Mount Rainer, followed by a grueling trek up Mount Kilimanjaro, Africa in 2009. Reaching the summit of both peaks was only part of the accomplishment, as the team raised over \$50,000 in two years.

"The commitment and risk they are putting forward is a great way to convince people to donate," stated Scott Shields, Family Tree Chief Executive Officer.

Not only were people excited to support the two adventurers, but many wanted to participate in the climb, which led to the first annual PIKESPEAKPALOOZA in August 2010. Thirteen climbers joined Tracy and Sheedy on a hike up Pikes Peak, followed by a "Palooza" in Manitou Springs, CO.

The 2011 PIKESPEAKPALOOZA took place on Friday, August 26th, and gained even more attention than last year, with seventeen climbers and a \$1,000 fundraising goal for each climber. Once again, the group raised over \$20,000 in support of the programs and services of Family Tree!

"We are so proud to support Family Tree and the amazing work they do for our community. Our climbs and fundraising will continue and we are truly humbled by the impact that the agency has on people in need," added Tracy.

Associates Group of Companies is a Denver Technological Center-based commercial insurance brokerage and financial services firm. The company serves 1,500 companies and is a premier provider of commercial property and casualty, workers compensation and employee benefits in the region.

To donate to Climbing For A Cause or for information on next year's climb, visit www.agcclimb.com.

Photo Caption (l-r): Shawn Tracy and Mark Sheedy.



SUPPORT FAMILY TREE!

On December 6, 2011, join Community First Foundation and Family Tree in uniting Coloradans to support local non-profit agencies.

Donate to Family Tree during the 24-hour period by visiting www.GivingFirst.org.

For questions or additional information, contact Family Tree at (303) 422-2133.

FAMILY TREE HOW TO HELP WORKSHOP

Family Tree's "How to Help" Workshop was developed in 2006 as staff recognized that victims of domestic violence-related homicides had reached out to a friend or family member for help. The How to Help workshop addresses the need to provide vital information and education to friends and family members so they can learn how to help their loved ones who are experiencing domestic violence. Friends and family members are the frontline workers to the victim, and can be the best advocates for their loved one if they have the tools and resources to provide appropriate support; these friends and family members have the trust, rapport and access and those things can NOT be passed on to professional advocates. Therefore, the goal of this workshop is to educate the friends and family members so that they too become experts.

5 Ways Friends and Family Can Help Someone In A Domestic Violence Relationship:

1. Open a dialogue and listen.
2. Show concern and appreciate the danger.
3. Commit to being supportive.
4. Value and compliment your loved one.
5. Observe, ask questions and offer to help.

For information on how to help or to attend our workshop, contact us at (303) 271-6559.

Corporate Spotlight

Encana Men's Relay Team Finishes 1st in Colfax Marathon

Family Tree participated in the Kaiser Permanente Colfax Marathon as a Charity Partner on May 20, 2011. We were fortunate to recruit 10 relay teams and 17 individual runners to run on our behalf. These dedicated runners impressively raised \$7,500 for Family Tree programs and services. Another impressive accomplishment was the Encana Men's Relay Team who finished 1st in the men's division. Their efforts were rewarded with a \$2,500 check from Kaiser Permanente to donate to Family Tree.

As the 2011 title sponsor of the Colfax Marathon, Kaiser Permanente enhanced their involvement with the Corporate Cup, a division of the marathon relay, in efforts to help encourage participation among corporations and businesses. A key aspect of the Corporate Cup is offering winning teams, like Encana, the opportunity to designate local non-profits to receive financial contributions from Kaiser.

At a special awards breakfast held in August, the Encana team -- consisting of runners John Jordan, Ryan Guidan, John Schopp, John Villalobos and team captain Peter Vail -- were recognized for their accomplishment and a check was presented to Family Tree.

About Encana: Encana is a leading North American natural gas producer that is focused on growing its strong portfolio of natural gas resource plays. By partnering with staff, community organizations and other businesses, Encana contributes to the strength and sustainability of the communities where it operates. Encana is proud to support community organizations that promote wellness, contribute to the prevention of illness or injury, and enhance health care, social and emergency services, as well as programs and events that improve the physical and social well-being of communities.



(l-r) Encana Team Captain **Peter Vail**, Family Tree Staff Member **Allyson Hakala** and Aurora Mayor **Ed Tauer** at the marathon awards breakfast on August 15.



Project IMPACT

Group Volunteers for Family Tree

On September 10, 2011 Xcel Energy's Safety Team carried out a project at Family Tree's Karlis Family Center as part of the 9/11 National Day of Service and Remembrance. The group of volunteers, led by Julia West, gathered resources to improve the safety and appearance of the playground for the youth and families we serve. All 12 volunteers had a hand in sanding and sealing the playground equipment, laying new rubber mulch and constructing a wooden border to enclose the playground. In just one day, Xcel Energy volunteers were able to make an incredible impact for Karlis Family Center that will last over time.

Xcel Energy's partnership with Family Tree does not end there! They plan to help individuals, youth and families who are homeless or are at risk of homelessness by donating food boxes to Family Tree Housing and Family Services program for



(l-r) Steve Ksiazek, Colton Ksiazek, Shelby Ksiazek, Robert Branchal, Kelli Branchal, Julia West, Scott Wylie, Marie, Janice Ksiazek (back), Jessica West, Ed Leo, Linda Cook, Anthony Cook.

Thanksgiving. This November we hope everyone will have a Thanksgiving meal to enjoy. The food boxes will include: instant mashed potatoes and stuffing, canned yams, green beans and fruit, and a \$15 grocery gift card for fresh turkey and perishable items. Without this generous donation, it is likely that hundreds of Colorado families we serve will not have a special holiday meal for Thanksgiving.

If you wish to donate Thanksgiving food boxes this November, please contact Jaclyn Wilmot, Director of Volunteer Services at jwilmot@thefamilytree.org or by phone at (303) 403-5892.

Support Family Tree in Ending Domestic Violence!

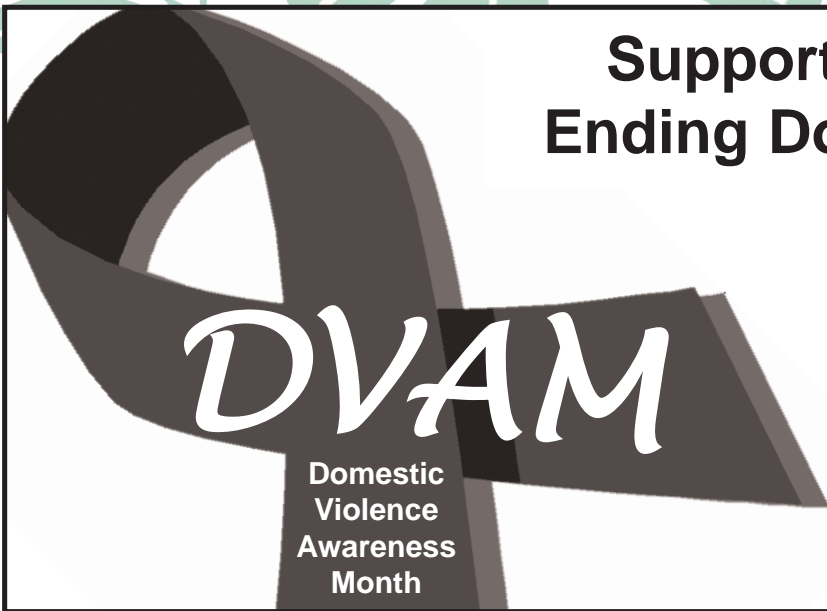
CONTEMPORARY EXPRESSIONS PHOTOGRAPHY

presents:

Girls Night Out

Thursday, October 20th
1320 27th St., Denver
4 p.m. - 8 p.m.

Enjoy local vendors, snacks, drinks and raffle prizes.
For more information visit www.cephotos.net



Domestic
Violence
Awareness
Month



For more information on how to become involved with Family Tree Next Generation, contact Nancy Tomb at (303) 422-2133 or ntomb@thefamilytree.org.

VOLUNTEER

PHILANTHROPY

SOCIAL EVENTS

Mile High
United Way
Helps Here



3805 Marshall St., Suite 100
Wheat Ridge, CO 80033



NONPROFIT ORG.
U.S. POSTAGE
PAID
DENVER CO
Permit No. 471